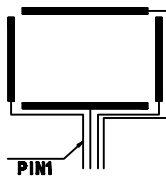
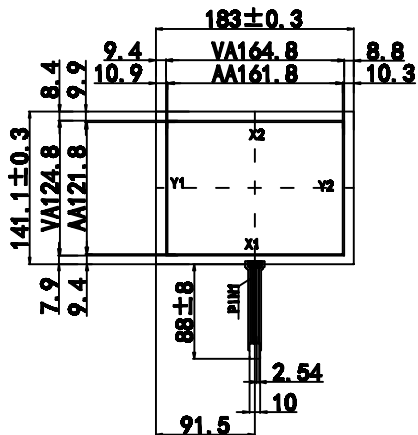
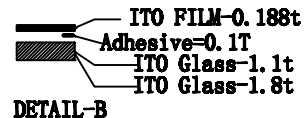
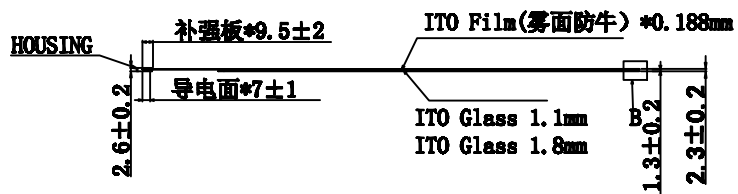


由 Autodesk 教育版产品制作



Contact Side:

FPC TS004-83.5



- Instruction:
1. Type: Film to Glass
 2. Operating Voltage: 3~7V
 3. Response Time: ≤10ms
 4. Storage Temperature: -20℃~+70℃
 5. Operation Temperature/Humidity: -10℃~+60℃/20%~95%
 6. Hitting Life: >10,000,000 Times. 250gf Force
 7. Writing Life: >1,000,000 Times 250gf Force
 8. Connect Material: FPC
 9. Film Thickness: 0.188mm
 10. Glass Thickness: 1.1mm, 1.8mm
 11. Light Transmission: ≥78%
 12. Force: 100g or less
 13. Linearity: ≤1.5%
 14. Insulation: ≥20MΩ
 15. Surface Hardness ≥3H(pencil)
 16. 未标注公差为 ±0.4

MODEL NO.	TS080A4B002	UNIT:	MM
DRAWN:	ZSY	TOLRANCE:	±0.3
DATE:	16-3-4	SCALE:	1:1
VERSION:	A0	REV:	